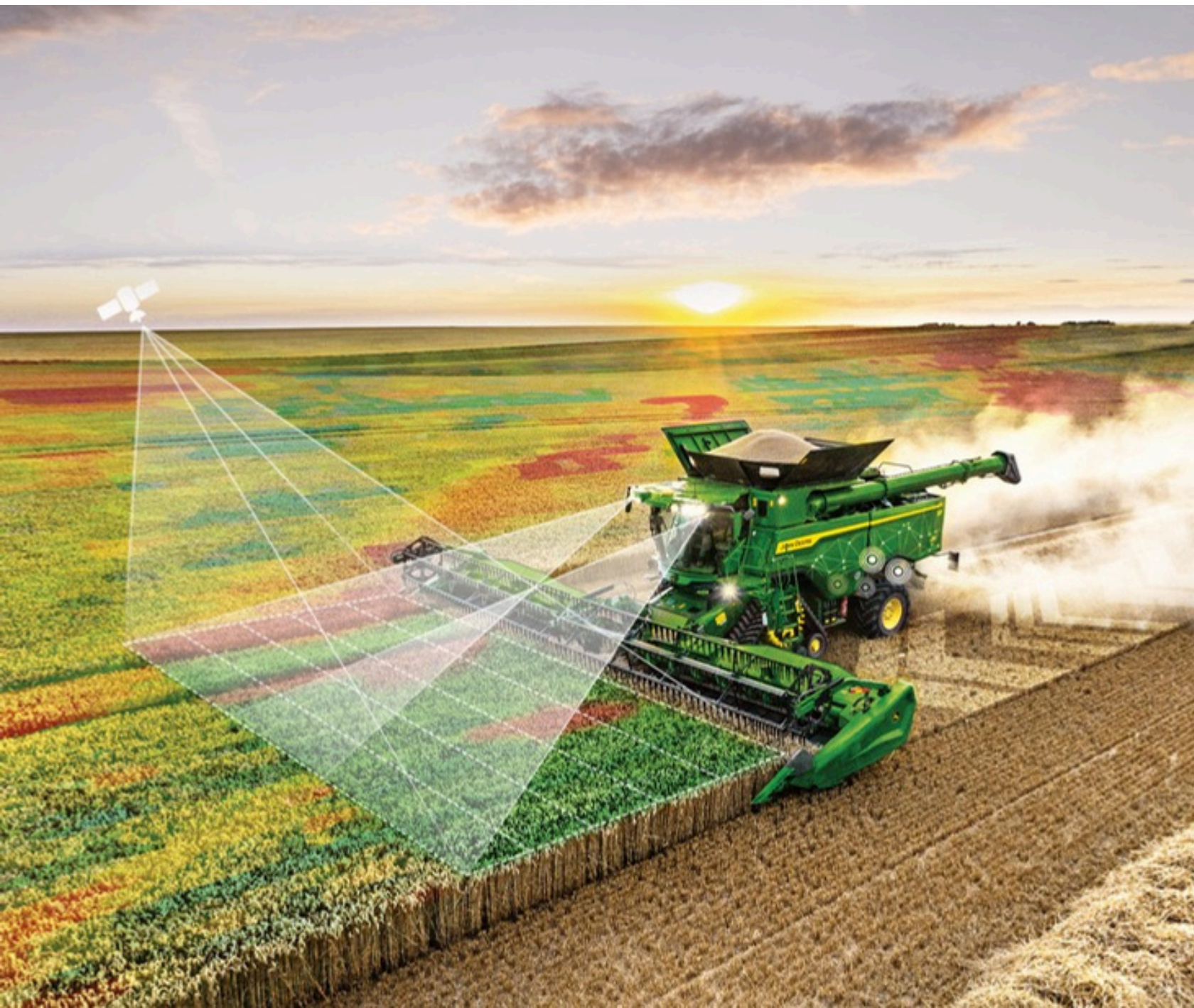




JOHN DEERE



# 2026 Precision Ag Catalog



# Index

- Page 1 Index
- Page 2 Expert Connect - Phone Number
- Page 3 Equipment Mobile
- Page 4 Connect Mobile
- Page 5 Operations Center
- Page 6 Store Locations & Contact Info
- Page 7 John Deere Display Lineup
- Page 8 Step 1 Foundational Equipment
- Page 9 Step 2 Advanced Technology
- Page 10 Step 3 Future of Precision Ag
- Page 13 Display Pricing
- Page 14 Tractor PUK
- Page 15 Air-Seeder/Cart PUK
- Page 16 Self-Propelled Sprayer PUK
- Page 18 Combine PUK
- Page 20 Planter PUK
- Page 22 Notes



# EXPERT CONNECT



Today's John Deere equipment is powered by advanced technology—and we're here to help you get the most out of it. Our Precision Ag Support Line is built specifically to assist with the software and digital tools that keep your operation running smoothly.

**402-256-6303**

**Scan the QR code to connect instantly.**



## What This Service Covers

Our team is focused exclusively on software-related support, including:

- **Software Updates & System Setup**

Keeping your displays, receivers, and connected platforms updated and operating correctly.

- **John Deere Operations Center™**

Assistance with setup, data flow, field creation, machine syncing, and day-to-day system use.

- **John Deere Equipment Mobile**

Help connecting your equipment, resolving app issues, and getting the most out of mobile tools.

- **Machine & Performance Optimization**

Guidance to improve accuracy, efficiency, and overall machine performance through software settings.

## Why This Service Exists

Mechanical issues—belts, bearings, hydraulics—are handled by our [Service Managers](#).

This support line was created to make sure your technology receives the same level of attention.

### You'll receive:

- Fast, accurate answers
- Specialized Precision Ag expertise
- Efficient support for all software-driven needs

### Our mission is simple

Keep your technology running as strong as your equipment.

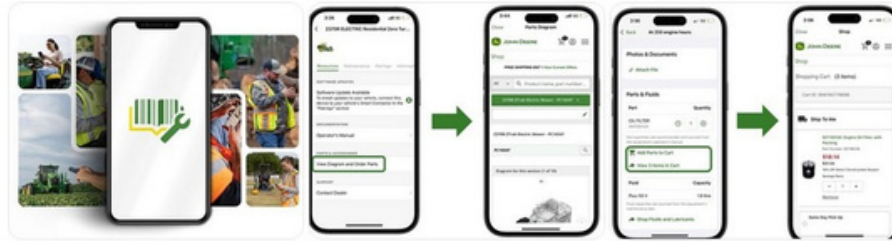




# EQUIPMENT MOBILE



**Equipment Mobile — Everything You Need, All in One Place.**



**Equipment Mobile — Total Control, Anywhere.**

Equipment Mobile from John Deere puts your machines, parts, and maintenance tools in the palm of your hand. Sync your fleet in minutes and manage one machine—or your entire operation—with ease.

### **Get the right parts the first time**

- Parts matched to your exact serial number
- Order directly through Shop.deere.com
- Fewer mistakes, less downtime, faster repairs

### **Maintenance made simple**

Mobile maintenance plans from John Deere Operations Center

### **Auto-assigned service intervals**

Add maintenance parts to your cart and check out in-app

### **All your equipment info—always available**

- Make, model, year & serial number
- Machine-specific parts catalogs

### **AI-searchable Operator’s Manuals**

- Maintenance & safety instructions
- Barcode scanner to add equipment fast

### **More power with connected machines With JDLink:**

- Engine hours, fuel & DEF levels (when equipped)
- Connected components & fleet syncing

### **Remote software updates on compatible machines**

(US & Canada; modem + Gen 4 or G5 display required)

### **Extra value for compact utility tractors**

- Operator’s Manuals & Tips Notebooks
- Compatible implements, attachments, and loaders

### **One app. One login. Total control.**

*Equipment Mobile keeps your John Deere equipment ready to work—every day.*





# CONNECT MOBILE



## John Deere Connect Mobile

**See job quality. Catch issues sooner. Make better decisions—right from the cab.**

John Deere Connect Mobile uses an Apple® iPad® in the cab to give operators a clearer, high-definition view of machine and job performance during planting, spraying, and harvesting. With an easy-to-use, consistent interface across equipment, operators can monitor multiple quality layers at once and react in real time.

### What it does

- Split-screen viewing to compare two quality layers side by side
- High-resolution maps & dashboards that make issues easy to spot
- Custom alerts when quality thresholds are exceeded
- Seamless integration with existing John Deere displays and receivers

### Planting insights

- Monitor actual vs. target population, singulation, seed spacing (CV), downforce, ride quality, ground speed, and variety
- Use Planter Quality Manager to see how each row is performing—instantly

### Spraying insights

- Track actual rate, rate deviation, pressure, and ground speed
- Understand performance changes as conditions vary

### Harvest insights

- View yield, moisture, ground speed, and relative grain loss
- Compare planting layers to harvest results for instant variety performance insight
- Interactive Combine Adjustment (ICA) helps optimize combine settings as conditions change (select models)

### Easy to get started

- Factory-installed or retrofit options available on many John Deere planters, sprayers, and combines
- Pair the iPad® to supported John Deere displays—no complicated setup
- GPS and documentation data flow automatically for accurate maps and records

### Bottom line:

Connect Mobile helps operators see more, respond faster, and improve performance—all season long. Talk with your Grosseburg Precision Ag Team to see if your equipment is compatible and get started.





# OPERATIONS CENTER



## Confidence. Control. Peace of mind—wherever work takes you.

The John Deere Operations Center brings your equipment, data, and people together in one powerful online platform. In just a few easy steps, you can create a John Deere account and gain the tools you need to keep your operation running smoothly, make informed decisions, and stay connected—anytime, anywhere.

### What you get:

- Equipment & account tools tailored to your operation
- Parts, service, warranty, recalls, and manuals matched to your exact serial numbers
- Live machine data & health alerts through JDLINK™ connectivity
- Remote monitoring & support when partnered with your John Deere dealer
- Mobile access with Operations Center Mobile and Equipment Mobile apps

### Why it matters

- Whether you farm, ranch, mow, build, or manage property, Operations Center helps you:
  - Monitor connected equipment in real time
  - Analyze performance and reduce downtime
  - Plan ahead, adjust on the fly, and do more in less time
  - Lower input costs and protect your bottom line

### Better together

- JDLINK™ connectivity allows machine and work data to flow automatically into Operations Center, connecting:
- Your work & results – Make decisions based on real performance data
  - Your team – Keep crews informed, aligned, and productive
  - Your advisors – Share accurate data for better recommendations
  - Your equipment – Stay ahead of issues before they cost you time
  - Your dealer – Enable proactive service and faster support
  - John Deere – Benefit from continuous innovation driven by connected customers

### The bottom line:

You can't be everywhere at once—but with JDLINK and the John Deere Operations Center, you're always connected to what matters most.

Talk with your Grossenburg team to get connected and put your data to work.



## Key Contact Information for All 9 Locations:



Doug Olson - Precision Ag Manager  
[DougOlson@Grossenburg.com](mailto:DougOlson@Grossenburg.com)

Von Fritsche - Precision Ag Specialist  
[VonFritsche@Grossenburg.com](mailto:VonFritsche@Grossenburg.com)

Craig Bathke - Service Manager  
[CraigBathke@Grossenburg.com](mailto:CraigBathke@Grossenburg.com)

1819 Chiefs Way  
Wayne, NE 68787  
Store #402-375-3325



Travis Kalous  
Precision Ag Specialist  
[TravisKalous@Grossenburg.com](mailto:TravisKalous@Grossenburg.com)

Justin Dickes  
Service Manager  
[JustinDickes@Grossenburg.com](mailto:JustinDickes@Grossenburg.com)

88189 Hwy 57  
Hartington, NE 68739  
Office #402-254-3908



Carson Barney  
Precision Ag Specialist  
[CarsonBarney@Grossenburg.com](mailto:CarsonBarney@Grossenburg.com)

Ben Lauck  
Service Manager  
[BenLauck@Grossenburg.com](mailto:BenLauck@Grossenburg.com)

712 West Main  
Bloomfield, NE 68718  
Office #402-373-4449



Colby Olson  
Precision Ag Specialist  
[ColbyOlson@Grossenburg.com](mailto:ColbyOlson@Grossenburg.com)

Ray Worden  
Service Manager  
[RayWorden@Grossenburg.com](mailto:RayWorden@Grossenburg.com)

1610 West Main Street  
Beresford, SD 57004  
Office #605-763-5020



Tommy Vaughn - Precision Ag Specialist  
[TommyVaughn@Grossenburg.com](mailto:TommyVaughn@Grossenburg.com)

Jenna Johnson - Precision Ag Specialist  
[JennaJohnson@Grossenburg.com](mailto:JennaJohnson@Grossenburg.com)

Thad Briggs - Corporate Service Manager  
[ThadBriggs@Grossenburg.com](mailto:ThadBriggs@Grossenburg.com)

31341 US Hwy 18  
Winner, SD 57580  
Office #605-842-2040



Isaiah Trevino - Precision Ag Specialist  
[IsaiahTrevino@Grossenburg.com](mailto:IsaiahTrevino@Grossenburg.com)

Jeff Swartz - Store Lead, Precision Ag Specialist  
[JeffSwartz@Grossenburg.com](mailto:JeffSwartz@Grossenburg.com)

Mark Knopp - Service Manager  
[MarkKnopp@Grossenburg.com](mailto:MarkKnopp@Grossenburg.com)

3701 East Hwy 14  
Pierre, SD 57501  
Office #605-224-1631



Jacob Jedlicka  
Service Tech & Precision Ag  
[JacobJedlicka@Grossenburg.com](mailto:JacobJedlicka@Grossenburg.com)

300 Wray Ave  
Philip, SD 57567  
Office #605-859-2636



Shawn Lane  
Service Manager  
[ShawnLane@Grossenburg.com](mailto:ShawnLane@Grossenburg.com)

10882 US Hwy 212  
Belle Fourche, SD 57717  
Office #605-892-2621



Jason Hanson  
Service Manager  
[JasonHanson@Grossenburg.com](mailto:JasonHanson@Grossenburg.com)

262 West Hwy 14  
Sundance, WY 82729  
Office #307-283-2971

# John Deere Displays

## **G5Plus CommandCenter™ (12.8")** **Premium in-cab display replacing 4600** **CommandCenter**

Massive 12.8" HD touchscreen  
(largest ever on John Deere machines)  
3× faster processor for instant boot and  
smooth performance  
Factory-installed on select 2024+  
CommandCenter-equipped models  
Built-in: AutoTrac™, Section Control, Data Sync,  
Documentation, OTA Updates, Remote Display Access  
Extended Monitor compatible for expanded  
visibility and control  
G5Plus Extended Monitor (12.8")  
More screen. More insight. More control.  
Additional 12.8" HD touchscreen for expanded  
run-page visibility  
Reduces swiping between pages  
Ideal for display-intensive operations

## **G5Plus Universal Display (12.8")**

Ultimate portability with top-tier performance  
12.8" HD touchscreen with 3× faster processor  
Includes permanent AutoTrac™ + Section Control license  
Optional AutoTrac RowSense™  
Available 1- or 3-year G5 Advanced License  
to unlock automation tools  
Compatible with select third-party controllers & GPS for  
documentation and Section Control  
Cross-Brand Compatibility  
(CommandCenter & Universal Displays)  
Integrates with John Deere Operations Center™ for  
complete analysis & reporting

## **G5 CommandCenter™ (10.1")** **High performance in a compact footprint**

Factory-installed on select 2024+ models  
10.1" HD touchscreen – 35% larger  
than previous generation  
3× faster processor  
Includes Data Sync, Documentation, OTA Updates & Remote  
Display Access  
G5 Universal Display (10.1")  
Portable precision with room to grow  
10.1" HD high-brightness display  
3× faster processor  
Permanent AutoTrac™, Section Control &  
RowSense™ available  
Ideal for mixed fleets and older John Deere machines

## **G5 Advanced Package**

Unlock advanced automation — tailored per  
machine  
Bundles premium precision tools into one  
renewable license  
Supports future autonomy advancements  
Machine-specific features (e.g., combines get  
AutoPath™, Machine Sync, In-Field Data Sharing  
— no irrelevant features)  
Available in 1- or 3-year options  
Need More Information- such as turn automation

## **4640 Universal Display**

Bring Gen 4 performance to older & mixed fleets  
Enhanced data merging &  
documentation accuracy  
Improved Section Control performance  
Run multiple products simultaneously  
Compatible with Gen 4 Extended Monitor  
for dual-screen setups

## **Steering & Guidance Solutions**

### **AutoTrac™ Universal 300**

Automated setup & calibration  
Smaller, quieter, more comfortable  
steering wheel  
Open-station ready (dust &  
moisture-resistant)  
Easily moved between machines for  
year-round value

### **AutoTrac™ Controller 300**

Integrated, ergonomic steering solution  
Reduces skips & overlaps  
Compatible with a wide range of tractors  
Works with SF1, SF3, and RTK accuracy  
AutoTrac™ Controller (Non-Deere Machines)  
Bring AutoTrac™ benefits to non-John  
Deere equipment

Cover more acres with less fatigue  
Reduce overlap and input waste  
Improve operator efficiency

# Step 1: Foundational Technology

## THE JOHN DEERE PRECISION STORY



**The Machine**

*The base.*

What would John Deere technology be without the equipment behind it? It all starts with the machine. Since 1837, John Deere has been at the forefront of the equipment industry, setting the standard for quality and innovation. The evolution of precision technology is deeply rooted in this rich history. By integrating cutting-edge technology with trusted machinery, John Deere continues to push the boundaries of what's possible. So, let's see what we can do when we stack more onto this machine.



**JDLink™ Modem**

*The connection.*



**G5 Display**

*The control.*



**StarFire™ Receiver**

*The position.*

It's time to add core hardware to the machine! Core hardware elevates machine connectivity to the next level:

- The receiver ensures precise guidance, providing the accurate data you need to build your operation.
- The modem keeps you connected, allowing real-time monitoring of your operation.
- The display lets you view and analyze everything from the cab, putting control at your fingertips.



JOHN DEERE



JOHN DEERE

**Operations Center & Equipment Mobile**

*The management system.*

Elevate your management system with two powerful apps:

- John Deere Operations Center™ and Equipment Mobile empower you to stay connected and manage your operations and equipment from anywhere, offering extensive capabilities at your fingertips, all at zero cost.

# Step 2: Advanced Technology

## Ready to Advance? G5 Is the Next Step

### BEFORE PURCHASE

Explore the seasonal transformations brought by the G5 Advanced License. Let's compare the impact of these precision technologies on operations through all production steps – tillage, planting, application, and harvest.

#### TILLAGE

*Tillage faces delays due to shorter planting windows, labor shortages, and unpredictable weather.*

G5 Advanced ensures efficient, complete tillage coverage, optimally preparing the soil for planting.

#### PLANTING

*The first and critical planting step demands ideal conditions, which can be hindered by intensive setup, unpredictable weather, and narrow time windows, which can lead to delays.*

G5 Advanced facilitates precise and efficient seed placement during planting, simplifying the operator's job in the field. The precision in this step lays the foundation for subsequent steps, making each one progressively easier and more efficient.

#### APPLICATION

*Precision is crucial to avoid crop damage and ensure accurate product placement. Operators struggle to cover vast acres quickly and efficiently.*

G5 Advanced ensures precise, efficient application, allowing operators to cover large areas quickly without compromising job quality or crop damage, and optimizing nutrient use and costs.

#### HARVEST

*Harvest can come with weather challenges, long days, weeks and complex logistics making it hard to coordinate efficiently to minimize potential crop and yield loss.*

G5 Advanced optimizes harvest operations by automating repetitive and high intensity tasks, while also facilitating better decision-making. This leads to increased productivity and the potential for shorter working hours for the crew.



PREPARE/TILLAGE



PLANT/SEED



APPLICATION



HARVEST

Across all production steps, operations face labor shortages and unskilled workers. The job can be hard for anyone to jump in and get it done.

Managers are overwhelmed with a never-ending list of tasks, often feeling the need to be in several places at once.

The relentless pace of technological change adds another layer of difficulty in staying up-to-date.

G5 Advanced simplifies equipment operation, allowing anyone to step in and be your best operator.

Consistent, precise performance across all production steps boosts productivity and yields. These integrated automation features let you get in the field and go, no matter the job at hand.

With a more hands-free experience in the cab, managers can focus on additional tasks outside of the cab.

This license evolves over time, adding more value to your operation, while keeping you at the forefront of technology.

# Step 2: Advanced Technology

## Ready to Advance? G5 Is the Next Step

	Prepare/ Tillage	Plant/Seed	Apply	Harvest
<b>AutoPath™</b>	Complete tillage coverage prepares the entire field for the season ahead.	Start strong with a precise first pass that sets every future pass up for success.	Work faster across more acres while maintaining job quality with documented row data.	Exact row data from planting makes harvest smoother, even with mismatched widths.
<b>AutoTrac™ Turn Automation</b>	Hands-free turns keep every pass square for complete field coverage.	Complete hands-free effortless, precise turns and re-enter each pass square, ensuring every part of the field is planted.	Consistent end-of-row turns reduce crop trample and protect crop health.	Precision re-entry without manual steering, keeping harvest smooth and efficient.
<b>AutoTrac™ Implement Guidance</b>	Reduces gaps and overlaps by keeping the implement precisely on track.	Automatic implement positioning removes guess rows, even in challenging field conditions.		
<b>In-Field Data Sharing</b>	Confidence in every pass starts with complete coverage.	When machines share data, every acre gets planted right.	Optimize nutrient use and input costs by keeping machines working together efficiently.	Enhance field logistics with shared visibility into coverage and estimated time to completion across machines.
<b>Grain Harvest Weight Sharing</b>				Real-time grain weight sharing keeps every operator informed.
<b>Machine Sync</b>				Synchronize the harvester and grain cart for seamless unloading and up to 8.3% greater efficiency.
<b>Satellite Maps</b>	Enhance mapping with real-world satellite imagery that adds clear context to the machine's location in the field.			
<b>Idle Reasons</b>	Reduce downtime by capturing idle reasons and turning them into insights that improve equipment and operational performance.			
<b>SF-RTK (Optional)</b>	SF-RTK delivers 2.5 cm accuracy with season-after-season repeatability.			

Step 3:  
After mastering these advanced technologies,  
you're ready for the final step:

## Full Autonomy



Talk with your  
Grossenburg Precision  
Ag Team to get  
connected and put your  
data to work.

# Display Investment

Retail List Price\*



## G5 W/Permanent AutoTrac™ Display

Do more with a bigger, faster, and clearer display

\$6,700



## G5<sup>Plus</sup> Display

Includes Permanent AutoTrac & Section Control

\$9,700



## StarFire™ 7500 Receiver

Achieve repeatable, +/- 2.5 cm accuracy for long-term precision in every operation.

\$4,300



## JDLink™ R Modem<sup>2</sup>

Connect your machines and wirelessly transfer your field data.

\$450



## JDLink™ M Modem<sup>2</sup>

Connect your machines and wirelessly transfer your field data.

\$450

\*Pricing subject to change at any time. Current pricing based on 1-31-26 from John Deere list prices. See Grossenburg Implement Precision Ag Team for Exact Pricing. Installation rate not included.

# Upgrade Your Tractor With A PUK

Bring next-level accuracy, automation, and connectivity to your John Deere tractor with the latest Precision Ag technology. Work smarter, cover more acres, and prepare your operation for the future.



## Rear Implement Ethernet

Unlock high-speed communication between your tractor and implement  
Allows faster, high-definition data flow  
Required for SeedStar™ 5 and future precision solutions

### A core building block for John Deere Autonomy

- Includes: ethernet switch, cab connector, rear connector, brackets, and harnessing  
Ideal for high-data implements like electric-drive planters

#### Compatible Tractors:

7R (2011+) 8R/8RT (2011+)  
8RX (2020.5+) 9R/9RT (2012+)  
9RX (2016+)

## G5 Advanced License + SF-RTK

Boost your guidance performance and field efficiency

Includes: AutoTrac™ Implement Guidance (Passive), AutoTrac Turn Automation, AutoPath™, In-Field Data Sharing, Machine Sync, and SF-RTK correction signal

#### Key Benefits:

- AutoPath™:** Creates automatic guidance lines based on planting or strip-till data  
Turn Automation: Hands-free end-row turns, speed control, and implement actions
- Machine Sync:** Smooth harvest operations between combine and grain cart  
Implement Guidance: Keeps your tool exactly on line—even on slopes and curves

## Precision Ag Benefits

Upgrade once - gain efficiency every pass.  
See up to six machines working together with In-Field Data Sharing  
Redirect labor to more important tasks while your tractor handles the tillage  
Extend working hours and maximize short weather windows  
Increase productivity using the equipment you already own  
Monitor progress from anywhere with Operations Center™ Mobile

## Ready for Autonomy

Prepare your operation for the future with autonomy-ready equipment

### Autonomy-Compatible Tractors:

8R/8RX (2020.5+) 9R/9RX (2022+)

### Autonomy-Compatible Tillage Tools:

2230FH (2017+, 44.5–60.5 ft)  
2430CP (2019+, 21–40 ft)  
2660VT (2019+, 25.4–49.6 ft)  
2680H (2023+, 25–45 ft)

**Your Tractor - Upgraded**  
**Precision technology that works for you,**  
**today and into the autonomous future.**

## John Deere Air Seeder/Cart Precision Upgrade Kit (PUK)

### Get More Accurate Seeding with the AccuRate™ Metering System

Upgrade your air cart with individually controlled stainless-steel electric meters that can seed up to 8x more accurately. This system improves precision, reduces wear, and lowers long-term maintenance costs.

#### With AccuRate™, you get:

- Better accuracy with high-fidelity prescriptions
- Correct product rates on curves with curve compensation
- Start/stop control for each meter using SectionCommand™ Pro
- Long-lasting durability from 316-grade stainless steel
- Optional EZCal™ system for quick, automatic calibration

#### Ready to improve accuracy and efficiency?

Grossenburg Implement can evaluate your equipment, help you choose the right upgrade, and install everything you need to boost ROI, reduce inputs, and improve yields.

**Price Depends On Year, Model & Compatibility.  
See Our Precision Ag Team Or Salesman For Pricing.**



# John Deere Self-Propelled Sprayer Precision Upgrade Kit (PUK)

## Upgrade Your Sprayer — Keep the Machine, Add the Technology

You don't need a brand-new sprayer to get the latest precision tools. John Deere Sprayer Precision Upgrades let you add advanced technology to your current machine so you can spray smarter, save on inputs, and improve accuracy in every pass.

### Benefits of Upgrading:

- Use fewer chemicals while improving kill rates
- Reduce overlap, drift, and crop damage
- Increase accuracy, efficiency, and profitability

### Popular Upgrade Options:

#### See & Spray™ Select & Premium

Target weeds and cut herbicide use

#### ExactApply™

More precise droplet control and reduced over-application

#### Individual Nozzle Control Pro

Individual nozzle control capability from John Deere is now available for qualifying 4X30 Series Sprayers and more current R Series and 400/600 Series models.

#### Individual Nozzle Control (Standard & Heavy Duty)

Better spray consistency and lower chemical/water costs

#### Pressure Recirculation/Product Reclaim

Get more consistent spray at every nozzle to reduce crop damage, while also saving on chemical and water costs. This upgrade helps your sprayer work smarter and more efficiently.

#### LED Lighting Packages

Improve visibility for safer, easier night spraying

#### Bottom Line:

These upgrades give your current sprayer new life and new capabilities—helping you work more efficiently and save money on every acre.

**Price Depends On Year, Model & Compatibility.**

**See Our Precision Ag Team Or Salesman For Pricing.**

# John Deere Self-Propelled Sprayer Precision Upgrade Kit (PUK)



## See & Spray™ Select

Detects weeds in real time and sprays only where needed to reduce herbicide use and input costs



## See & Spray™ Premium

Detects weeds with real-time camera detection and sprays only where needed to reduce herbicide use and input costs



## ExactApply™

Maintains accurate spray rates at any speed for consistent application and better results



## Individual Nozzle Control Pro

Automatically turns nozzles on and off to reduce overlap, minimize skips and improve spray accuracy



## Pressure Recirculation/Product Reclaim

Maintains constant pressure across the boom and reclaims unused product to deliver instant on-target application and reduce waste



## LED Lighting Package

Bright, efficient LED lighting keeps you productive after the sun goes down



**Price Depends On Year, Model  
& Compatibility.  
See Our Precision Ag Team Or  
Salesman For Pricing.**

# John Deere Combine Precision Upgrade Kit (PUK)

## Keep Your Combine — Just Upgrade It.

Boost your harvest performance without buying a new machine. John Deere Combine Precision Upgrades add the latest technology to your existing combine so you can increase productivity, improve accuracy, and get more value out of every acre.

These upgrades are designed to help you harvest faster, cleaner, and with less stress by improving unloading, visibility, crop handling, and machine control.

### Top Upgrade Options:

#### ✓ Auto Unload



- Automatic grain cart positioning
- More consistent fills
- Less operator stress

#### ✓ Cross Auger Shutoff



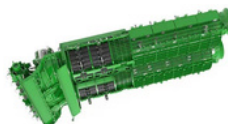
- Reduces auger wear
- Smoother startups
- Less downtime

#### ✓ Adjustable Auger Spout



- Aim your grain flow from the cab
- Cleaner unloading
- Reduced grain loss

#### ✓ Remote Concave Covers



- Open/close covers from the cab
- Better performance in changing crop conditions

#### ✓ Remote Separator Grate Covers



- Instantly adapt to different crops
- Increased capacity & improved grain quality

#### ✓ LED Lighting Upgrade



- Brighter, longer-lasting lights
- Better visibility for nighttime harvest

### Why Upgrade?

- ✓ Improve combine efficiency
- ✓ Reduce harvest stress
- ✓ Increase productivity in all crop conditions
- ✓ Get more value from equipment you already own

**Price Depends On Year, Model & Compatability.  
See Our Precision Ag Team Or Salesman For Pricing.**

# John Deere Planter Precision Upgrade Kit (PUK)

## Upgrade Your Planter for Better Emergence, Spacing & Yields

Your planter is a major investment—why not boost its performance instead of buying new? John Deere Planter Precision Upgrade Kits (PUKs) bring the latest row-unit technology to your existing planter so you can plant faster, more accurately, and more consistently.

Planting within the right weather window and achieving uniform emergence are two of the biggest drivers of yield. These upgrades help you hit both.

**Plus, you get a new serial number and a 1-year warranty, all at a lower cost than purchasing a new planter.**

### What PUK Upgrades Help Improve:

- Planting Window – Faster, more accurate planting to hit ideal timing
- Uniform Spacing – Better seed placement for higher yields
- Uniform Emergence – Consistent depth and downforce
- Correct Population – Technology to manage curves, speed & variability
- Nutrient Placement – Precise fertilizer and insecticide application

## Popular Upgrade Options:

### ExactEmerge™

10 mph planting with perfect spacing & depth

### MaxEmerge™ 5e

Cost-efficient accuracy with curve compensation

### Ultimate Planter Upgrade

New factory row units + full tech package

### Meter Upgrade

Convert mechanical drive to electric meters

### LED Lighting

Work confidently after dark with bright, long-lasting LED lights that illuminate the entire planter toolbar — even past the row ends

### Pneumatic Closing Wheels

Adjust closing wheels in seconds. Available on MaxEmerge 5e and ExactEmerge row units

### ExactShot™

ExactShot applies a precise burst of starter fertilizer only where each seed needs it.

### ExactRate™

Apply nitrogen accurately while you plant to boost yield potential.

### ExactChem™

Precise, row-by-row insecticide control.

### FurrowVision™

See seed placement live in the furrow.

### Weight Distribution

Reduce compaction in the center section of CCS Planters.

### Individual Row Hydraulic Downforce

Row-by-row depth control.

### Easy Adjust & Yetter Row Cleaners

Use three preset heights to remove residue from the seed trench. Break up soil compaction by adding Yetter Twister closing wheels to your planter.

# John Deere Planter Precision Upgrade Kit (PUK)



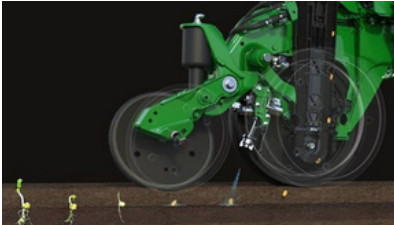
## ExactEmerge™

10 mph planting with perfect spacing & depth



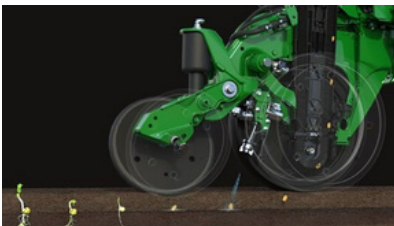
## MaxEmerge™ 5e

Cost-efficient accuracy with curve compensation



## ExactRate™

Apply nitrogen accurately while you plant to boost yield potential



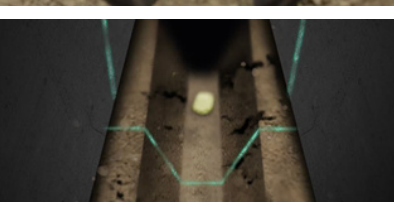
## ExactShot™

ExactShot™ applies a precise burst of starter fertilizer only where each seed needs it



## ExactChem™

Precise, row-by-row insecticide control



## FurrowVision™

See seed placement live in the furrow



## Individual Row Hydraulic Downforce

Row-by-row depth control



## Weight Distribution

Reduce compaction in the center section of CCS Planters

Price Depends On Year, Model & Compatibility.  
See Our Precision Ag Team Or Salesman For Pricing.







**RETURN ADDRESS ONLY**

Grossenburg Implement, Inc.  
1610 W Main St.  
Beresford, SD 57004



Contact your nearest Grossenburg location precision ag or sales team for more details.

- WINNER, SD**
- PIERRE, SD**
- PHILIP, SD**
- BELLE FOURCHE, SD**
- BERESFORD, SD**
- BLOOMFIELD, NE**
- HARTINGTON, NE**
- WAYNE, NE**
- SUNDANCE, WY**

Contact your precision ag team or sales representative for complete details on pricing models and what precision ag components will work for your current equipment.



[grossenburg.com](http://grossenburg.com)